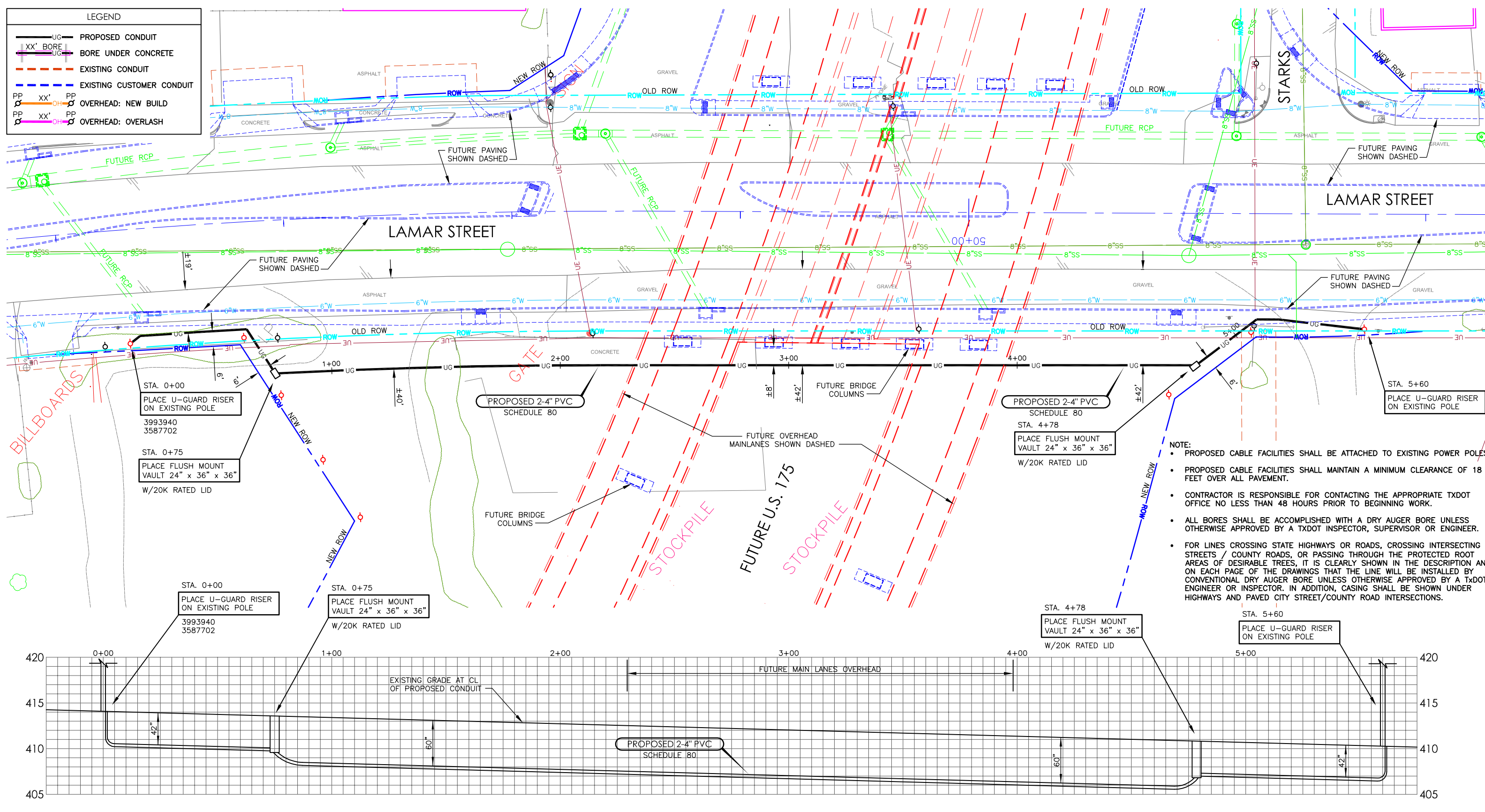


**LEGEND**

- UG — PROPOSED CONDUIT
- XX' BORE — BORE UNDER CONCRETE
- EXISTING CONDUIT
- PP XX' PP — EXISTING CUSTOMER CONDUIT
- OH — OVERHEAD: NEW BUILD
- OH — OVERHEAD: OVERLASH



- NOTE:**
- PROPOSED CABLE FACILITIES SHALL BE ATTACHED TO EXISTING POWER POLES.
  - PROPOSED CABLE FACILITIES SHALL MAINTAIN A MINIMUM CLEARANCE OF 18 FEET OVER ALL PAVEMENT.
  - CONTRACTOR IS RESPONSIBLE FOR CONTACTING THE APPROPRIATE TXDOT OFFICE NO LESS THAN 48 HOURS PRIOR TO BEGINNING WORK.
  - ALL BORES SHALL BE ACCOMPLISHED WITH A DRY AUGER BORE UNLESS OTHERWISE APPROVED BY A TXDOT INSPECTOR, SUPERVISOR OR ENGINEER.
  - FOR LINES CROSSING STATE HIGHWAYS OR ROADS, CROSSING INTERSECTING STREETS / COUNTY ROADS, OR PASSING THROUGH THE PROTECTED ROOT AREAS OF DESIRABLE TREES, IT IS CLEARLY SHOWN IN THE DESCRIPTION AND ON EACH PAGE OF THE DRAWINGS THAT THE LINE WILL BE INSTALLED BY CONVENTIONAL DRY AUGER BORE UNLESS OTHERWISE APPROVED BY A TXDOT ENGINEER OR INSPECTOR. IN ADDITION, CASING SHALL BE SHOWN UNDER HIGHWAYS AND PAVED CITY STREET/COUNTY ROAD INTERSECTIONS.

