

# OTDR report 1310 nm

## Job info

Job ID : RANDOM  
Contractor : GTI  
Customer : RANDOM  
Test date : 9/10/2016 (3:39:04 PM GMT-6:00)

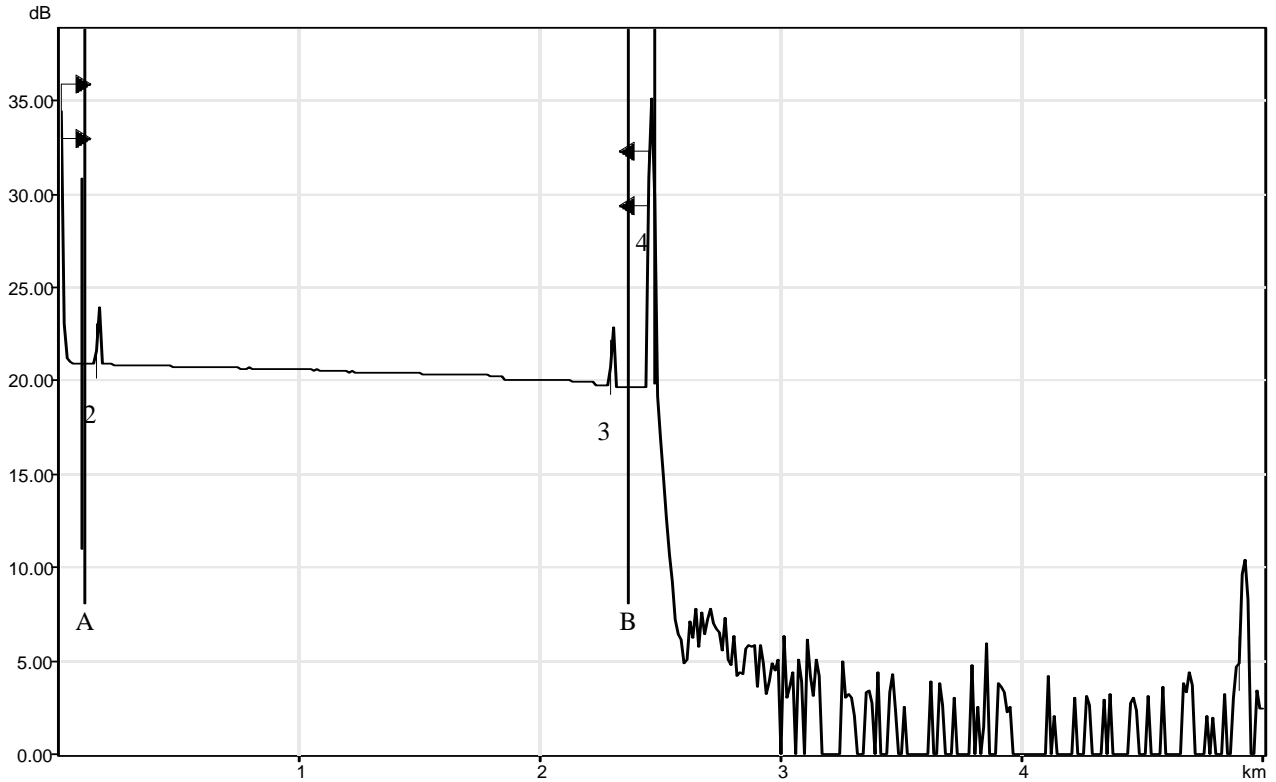
Reason :  
Operator A : BRAD  
Operator B : DREW  
File : KIRBY-KIRBYSC01-97-OTDR.trc

## Cable info

Fiber ID : Fiber0001  
Location A : RANDOM  
Cable mfr. :  
Subset ID :

Cable ID :  
Location B : SC01  
Type :  
Color ID :

## OTDR trace



# OTDR report 1310 nm

## Events table

No.	Loc. (km)	Event type	Loss (dB)	Refl. (dB)	Att. (dB/km)	Cumul. (dB)
1	0.0000	Launch Level	---	-29.6		0.000
		Fiber Section (0.1545 km)	0.080		0.516	0.080
2	0.1545	Reflective Event	0.023	-52.1		0.103
		Fiber Section (2.1339 km)	1.000		0.469	1.103
3	2.2884	Reflective Event	0.077	-50.9		1.180
		Fiber Section (0.1532 km)	0.050		0.329	1.231
4	2.4415	Merged Event	---	-24.5		1.231
	2.4415			-24.5		
				-25.6		
		Fiber Section (2.4562 km)	1.394		0.567	---
	4.8978	Echo	---	-47.1		---

## Marker info

A : 0.0976 km, 20.884 dB	B : 2.3576 km, 19.634 dB
a : 0.0970 km, 20.891 dB	b : 2.4724 km, 25.930 dB
A to B distance : 2.2599 km, 1.250 dB	A to B ORL : 36.62 dB
3-pt. reflectance : *****	A to B LSA att. : 0.479 dB/km
4-pt. Ev. loss : 4.936 dB	

## Test and cable setup

Wavelength : 1310 nm (SM-9µm)	Acq. time : 10 s
Filename : Random SC01-97-OTDR.trc :	Pulse width : 100 ns
Hardware : FTB-7200D-023B-EI	Helix factor : 0.00 %
Serial number : 599116	Splice loss threshold : 0.250 dB
Software : N/A	Reflectance threshold : -65.0 dB
Range : 5.0000 km	End-of-fiber threshold : 5.000 dB
IOR : 1.467700	
RBS : -79.44	

# OTDR report 1550 nm

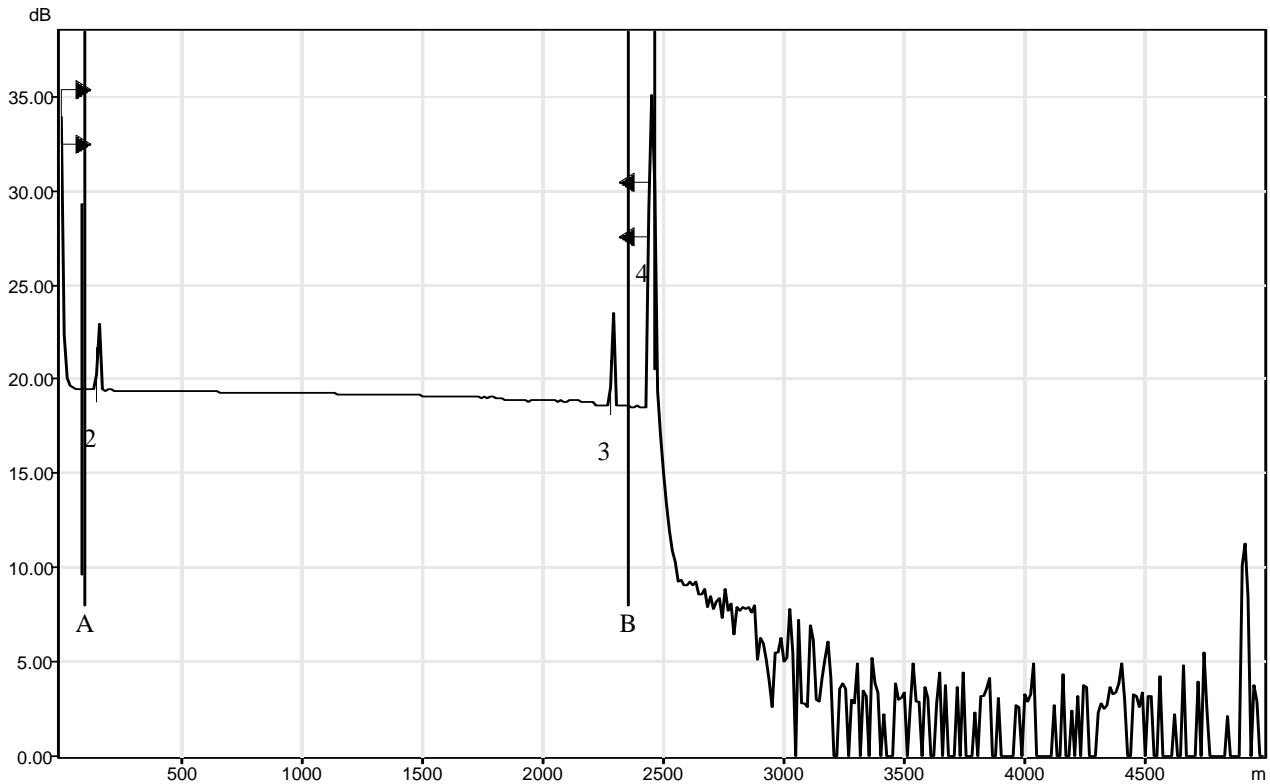
## Job info

Job ID	: Random	Reason	:
Contractor	: GTI	Operator A	: BRAD
Customer	: Random	Operator B	: DREW
Test date	: 9/10/2016 (3:39:16 PM GMT-6:00)	File	: Random OTDR.trc

## Cable info

Fiber ID	: Fiber0001	Cable ID	:
Location A	: Random	Location B	: SC01
Cable mfr.	:	Type	:
Subset ID	:	Color ID	:

## OTDR trace



# OTDR report 1550 nm

## Events table

No.	Loc. (km)	Event type	Loss (dB)	Refl. (dB)	Att. (dB/km)	Cumul. (dB)
1	0.0000	Launch Level	---	-30.2		0.000
		Fiber Section (0.1544 km)	0.142		0.921	0.142
2	0.1544	Reflective Event	0.076	-53.2		0.218
		Fiber Section (2.1336 km)	0.678		0.318	0.895
3	2.2880	Reflective Event	0.013	-49.7		0.908
		Fiber Section (0.1538 km)	0.058		0.375	0.966
4	2.4418	Reflective Event	---	-24.7		0.966
		Fiber Section (2.4552 km)	3.683		1.500	---
	4.8970	Echo	---	-48.9		---

## Marker info

A : 0.0976 km, 19.490 dB	B : 2.3576 km, 18.569 dB
a : 0.0970 km, 19.488 dB	b : 2.4724 km, 25.362 dB
A to B distance : 2.2599 km, 0.921 dB	A to B ORL : 38.71 dB
3-pt. reflectance : *****	A to B LSA att. : 0.311 dB/km
4-pt. Ev. loss : 5.157 dB	

## Test and cable setup

Wavelength : 1550 nm (SM-9µm)	Acq. time : 10 s
Filename : Random 1-97-OTDR.trc :	Pulse width : 100 ns
Hardware : FTB-7200D-023B-EI	Helix factor : 0.00 %
Serial number : 599116	Splice loss threshold : 0.250 dB
Software : N/A	Reflectance threshold : -65.0 dB
Range : 5.0000 km	End-of-fiber threshold : 5.000 dB
IOR : 1.468325	
RBS : -81.87	